

## 2022 ABD GROUP Classic Yacht Regatta

10 – 13 February 2022

[www.classicyacht.org.nz](http://www.classicyacht.org.nz)

The Organising Authority is the  
Royal New Zealand Yacht Squadron and the Classic Yacht Association of New Zealand  
181 Westhaven Drive, Westhaven, Auckland 1101 Tel: +64 21 818-448

### Sailing Instructions (Including Amendment 1)

#### Amendment 1:

**Clause 4.1** Replace 'Quarterdeck Restaurant' with 'Dinghy Locker'  
Replace 'mandatory' with 'requested'

**Clause 17.4** Replace Saturday & Sunday with Friday & Saturday

**Clause 17.5** Replace Monday night with Sunday night

**Addendum B Courses** Race 1 Friday 11 February – remove reference to Orakei Buoy

#### 1. Rules

- 1.1. The regatta will be governed by the 'Rules.' as defined in the current Racing Rules of Sailing 2021-2024.
- 1.2. Attention is drawn to Regulation No.2 and clause 2.2 Yachting New Zealand (YNZ) Safety Regulations: The Maritime Transport Act 1994 states that the master of the vessel is at all times responsible for the safety of the vessel, the safety of those on board, discipline on board and for complying with all maritime rules, regulations and bylaws.
- 1.3. The YNZ Safety Regulations Part II, Category 5 will apply. It is recommended that an inflatable life jacket complete with harness be available for all crew.
- 1.4. Attention is drawn to Safety Regulation 23 relating to classic yachts.
- 1.5. All boats shall carry an operational VHF radio.
- 1.6. The organising authority reserves the right to make spot safety checks and to disqualify any boat found to be noncomplying.
- 1.7. Any contact however minor with any navigational mark shall be reported to the race committee by that yacht or any other yacht witnessing the incident. Competitors shall keep clear of all ships 500 tonnes net register and over. This particularly refers to but is not limited to the main navigational channel. Competitors shall abide by the current harbor regulations. This rule is not open to protest by other competitors.
- 1.8. Should there be any conflict between the Notice of Race (NOR) and these Sailing Instructions, the Sailing Instructions shall prevail. This amends Rule 63.7.

#### 2. Changes to Sailing Instructions

- 2.1. Any change to the Sailing Instructions will be posted on the official notice board before 0900 hours on the day it will take effect, except that any change to the schedule of races will be posted by 1800 hours on the day before it will take effect.

#### 3. Communications with Competitors

- 3.1. Notices to competitors will be posted on the official notice board located inside the western Main Entrance of the RNZYS clubrooms.
- 3.2. On the water the race committee intends to monitor and communicate with competitors on VHF 17 which must be monitored by competitors at all times.



ROYAL NEW ZEALAND YACHT SQUADRON



THE CLASSIC YACHT ASSOCIATION  
OF NEW ZEALAND

- 3.3 While racing, from the first warning signal until the end of the last race of the day, except in an emergency or to advise retirement from racing a boat shall not make voice or data transmissions and shall not receive voice or data communications that is not available to all boats

#### 4. Schedule of Events

- 4.1 Briefing: A skippers briefing will be held at 1830hrs on Thursday 10 February in the **Dinghy Locker Quarterdeck Restaurant** at the Royal New Zealand Yacht Squadron. Attendance is **requested mandatory** for all skippers or a designated crew member from each yacht.
- 4.2 The schedule of races is as follows:

Day/Date	Race	Time of first warning signal
Fri 11 Feb	1	1545
Sat 12 Feb	2 & 3	1055
Sun 13 Feb	4 & 5	1055

- 4.3 Details of start times for each Division are shown in Addendum A.
- 4.4 On Saturday 12 February and Sunday 13 February a warning signal for Races 3 and 5 will be displayed as soon as possible after the completion of all boats in races 2 and 4 and within the time limit as described in SI 13.
- 4.5 Race HQ will be open on Friday and Saturday after racing for drinks and informal race day prizgiving.
- 4.6 The Event prizgiving and dinner buffet will be held in RNZYS Ballroom after racing on Sunday.

#### 5. Divisional Flags

- 5.1 The following divisions will apply to each race individually and the series results.

Division 1	Classic A Bermudan Rigged	Black
Division 2	Classic A Gaff Rigged	Purple
Division 3	Classic B Bermudan Rigged	Green
Division 4	Classic B Gaff Rigged	Yellow
Division 5	A Modern Classic	White

#### 6. Courses

- 6.1. No later than the warning signal, the Race Committee will designate the course to be sailed by displaying the course number. The courses to be sailed, the order in which the marks are to be passed, and the side on which each mark is to be left are shown in Addendum B – Courses.
- 6.2 Should conditions be unsuitable for the completion of a race on any day the Race Committee may change any course. Any change will be advised on VHF 17 before the warning signal of that race. Failure to hear the change will not be grounds for a request for redress. This changes RRS 62.1.(a).



ROYAL NEW ZEALAND YACHT SQUADRON



THE CLASSIC YACHT ASSOCIATION  
OF NEW ZEALAND

## 7.0. Marks

- 7.1 The starting marks are detailed in SI 10.1
- 7.2 The finishing marks are described in SI 11.1 and 11.2.
- 7.3 All rounding marks will be the Auckland Harbour racing buoys.

## 8.0 Fairway Marks

Boats racing shall pass on the main channel side of the following fairway marks:

1. Rangitoto Beacon,
2. Iliomama Rock Beacon,
3. Browns Island Beacon,
4. Beacon on Emu Rock (off Motutapu),
5. Bean Rock Light and Doris Rock Beacon (approx. 25m north),
6. Red buoys on eastern side of Motuihe Channel,
7. Beacon on Sewer Outlet (Orakei),
8. Cable beacons east of Devonport Wharf,
9. Green Sandspit marker stake (SW of Torpedo Wharf),
10. All moored vessels in or adjacent to the designated Small Craft Moorings areas shown on Chart NZ 5322.
11. The Okahu Bay wave break and all moored vessels in the Okahu Bay mooring area
12. The harbour bridge main navigational span pylons.

## 9.0 Obstructions – Refer Addendum C

## 10.0 The Start

- 10.1 Race start area is in Northern Leading area. For all races the start line will be between a staff displaying an orange flag on the race committee vessel and the course side of a laid blue outer distance mark.
- 10.2 When a starting sequence is in progress, boats whose warning signal has not been made shall avoid the starting area. The starting area is defined as the area 50 metres from the starting line and marks in all directions.
- 10.3 To alert boats that a race or sequence of races will begin soon, the orange starting line flag will be displayed with one sound at least five minutes before a warning signal is made.
- 10.4 If any part of a boat's hull is on the course side of the starting line at her starting signal and she is identified, the race committee will attempt to broadcast her name and/or sail number on VHF 17. Failure to make a broadcast, failure of her to hear such a broadcast, or the order in which boats are broadcast will not be grounds for a request for redress. This changes RRS 62.1(a).
- 10.5 General Recalls: In the event of a General Recall the recalled division will be restarted 5 minutes after the last scheduled start. If more than one division is recalled these divisions will start at 5 minute intervals after the last scheduled start in the sequence in which they were recalled. In the event that the last scheduled division to start is recalled and no other division has been recalled previously the new warning signal will be given no less than 5 minutes after the previous starting signal. "First Substitute" will be lowered at the same time as the new warning signal is flown (This changes RRS 29.2). In all other cases "First Substitute" will be lowered at the same time as the preparatory signal is lowered 1 minute before the start of the next division.

## 11.0 The Finish

- 11.1 For Races 2 and 4, the finish line will be between a staff displaying a blue flag on the race committee vessel and the course side a laid blue outer distance mark in the Northern Leading area.

11.2 For Races 1, 3 and 5 the finish line will be between a staff displaying a blue flag on the race committee vessel and the course side of the yellow Orakei buoy.

## 12.0 Penalty System

- 12.1 A boat that has taken a penalty or retired under Rule 31 or Rule 44.1 shall notify the Race Officer within the protest time limit.
- 12.2 The two-turns penalty as per RRS 44.1 will apply.

## 13.0 Time Limits and Target Times

Race	Race Time Limit	Finish Window
1, 2 & 4	120min	30min
3 and 5	1700hrs	-

- 13.1 Boats failing to finish within the Finish Window after the first boat starts, sails the course and finishes within the race time limit will be scored Did Not Finish without a hearing. This changes RRS 35, A5.1 and A5.2.

## 14.0 Hearing Requests

- 14.1 Immediately after finishing a boat intending to protest shall, in addition to the requirements of Rule 61.1(a), inform the race committee boat at the finishing line of her intention to protest and the identity of the boat(s) protested against. The protesting boat must receive an acknowledgement from the race committee. This changes Rule 61.
- 14.2 Hearing request Forms will be available from the Sailing Office at the RNZYS. Protests shall be delivered to the Sailing Office at the RNZYS within the protest time limit.
- 14.3 For each division, the protest time limit is 90 minutes after the last boat has finished the last race of the day. The same protest time limit applies to all protests by the race committee and protest committee and to requests for redress. This changes Rules 61.3 and 62.2.
- 14.4 Notices will be posted within 30 minutes of the protest time limit to inform competitors of hearings in which they are parties or named as witnesses. All hearings will be held at RNZYS.
- 14.5 Notices of protests by the race committee or protest committee will be posted to inform boats under RRS 61.1(b).
- 14.6 On the last day of the regatta a request for reopening a hearing shall be delivered:
- within the protest time limit if the party requesting reopening was informed of the decision on the previous day;
  - no later than 30 minutes after the party reopening was informed of the decision on that day.
  - This changes Rule 66.

## 15.0 Scoring

- 15.1 A total of 5 races are scheduled, one(1) race will constitute a series. Each boat's series score shall, subject to rule 90.3(b), be the total of her race scores excluding her one worst score.



ROYAL NEW ZEALAND YACHT SQUADRON



THE CLASSIC YACHT ASSOCIATION  
OF NEW ZEALAND

## 16.0 Handicapping

16.1 CYANZ handicaps will be used for Classic and Modern Classic divisions.

16.2 Class Association handicaps will be used for all class yachts competing unless there are less than four boats entered from the class. If there are less than four boats the boats will be handicapped by the CYA. The Handicapper, as appointed by the Organising Authority, shall reserve the right to review or adjust any boat's rating or handicap during the course of the regatta. This shall be carried out in consultation with the Race Committee and any decision to alter a boat's rating shall be final and no correspondence will be entered into.

## 17.0 Prizes

17.1 Trophies will be awarded in all divisions and classes (minimum of 4 entries) as follows:

- (a) Minimum of 4 entries: Winners on Line and 1st on Handicap;
- (b) 4-6 entries: Winners on Line and 1st & 2nd on Handicap;
- (c) 7+ entries: Winners on Line and 1st, 2nd & 3rd on Handicap.

17.2 The number of entries as above will be determined on Monday 07 February 2021 i.e. Late Entries will not be included.

17.3 The winners of all cups and trophies shall retain the trophies in perpetuity with the exception of the Col Wild Trophy, the Alden Tray, the Peters & May Trophy and the American Flag.

17.4 ~~Friday & Saturday~~ ~~Saturday & Sunday~~: Spot prizes may be claimed by a crew member of the winning boat.

17.5 ~~Sunday: Monday~~: The helmsperson or owner who signed the entry form MUST be present to collect spot prizes or they will be redrawn.

## 18.0 Safety Regulations

18.1 A boat that retires from a race shall notify the race committee as soon as possible via VHF channel 17 or by calling the Race Officer on 027 451-6851 or 021 818-448.

18.2 Requests for assistance are to comply with international calling formats and direction as follows:

- (a) Distress & Emergency Calls: VHF Channel 16 (Northern Region Coastguard)
- (b) Prompt Vessel or Medical Assistance: VHF Channel 60 (Outer Gulf), VHF Channel 64 (Inner Gulf).
- (c) Mobile: \*500

## 19.0 Insurance

19.1 Each participating boat shall be insured with valid marine third-party liability insurance with a minimum cover to \$5,000,000 per incident or the equivalent.

## 20.0 Disclaimer of Liability

All those taking part in RNZYS/CYA races or any other sailing events controlled by the RNZYS/CYA, as between the RNZYS/CYA and each of those so taking part, do so at their own risk and responsibility and the RNZYS and any sponsor associated with this event has no liability for any damage, loss or any penalty suffered by any boat crew or any other person taking part in such events. The RNZYS/CYA and any sponsor associated with this event shall not be responsible for the sea-worthiness of a boat whose entry is accepted and/or the sufficiency and/or adequacy of its equipment or the competence of its skipper or crew. The RNZYS/CYA reserves the right in its sole and uncontrolled discretion to refuse any entry.

## Addendum A – Start & Finish

The time and order of starts will be as follows:

### **Race 1 – Friday 11 February 2022** – Start in Northern Leading area and finish at yellow

Orakei Buoy.

1550hrs	Division 5
1555hrs	Division 1
1600hrs	Division 2
1605hrs	Divisions 3 & 4

### **Race 2 – Saturday 12 February 2022** – Start and finish in Northern Leading area.

1100hrs	Division 5
1105hrs	Division 1
1110hrs	Division 2
1115hrs	Divisions 3 & 4

### **Race 3 – Saturday 12 February 2022** – Start in Northern Leading area and finish at yellow Orakei Buoy.

Race 3 will start as soon as possible following completion of all boats participating in the preceding race and within the time limit as described in SI 13.

Boats will start in the same sequence as detailed for Race 2.

### **Race 4 – Sunday 13 February 2022** – Start and finish Northern Leading area.

1100hrs	Division 5
1105hrs	Division 1
1110hrs	Division 2
1115hrs	Divisions 3 & 4

### **Race 5 – Sunday 13 March 2022** – Start in Northern Leading area. And finish at yellow Orakei Buoy.

Race 5 will start as soon as possible following completion of all boats participating in the preceding race and within the time limit as described in SI 13.

Boats will start in the same sequence as detailed for Race 4.

### Addendum B – Courses

#### Race 1- Friday 11 February

Course No.	Divisions	Course	Dist. (nm)
1	5, 1, 2	Start – North Head Buoy (S) – Salt Works Buoy (S) – Northern Leading Buoy (S) – to Finish	6.8
	3, 4	Start – North Head Buoy (S) – Flax Point Buoy (S) – Northern Leading Buoy (S) – to Finish	5.8
2	5, 1, 2	Start – Rangitoto Buoy (P) – Narrow Neck Buoy (P) – Northern Leading Buoy (S) – to Finish	7.2
	3, 4	Start – Rangitoto Buoy (P) – Narrow Neck Buoy (P) – North Head Buoy (S) – <del>Orakei Buoy (S)</del> – to Finish	5.4
3	5, 1, 2	Start – Orakei Buoy (S) – Rough Rock Buoy (P) – Narrow Neck Buoy (S) – Flax Point Buoy (S) – <del>Orakei Buoy (S)</del> – to Finish	8.6
	3, 4	Start – Orakei Buoy (S) – Flax Point Buoy (S) – <del>Orakei Buoy (S)</del> – to Finish	6.7
4	5, 1, 2	Start – Rangitoto Buoy (S) – Illiomama Buoy (S) – Motukorea Buoy (S) – Salt Works Buoy (P) – <del>Orakei Buoy (S)</del> – to Finish	8.8
	3, 4	Start – Rangitoto Buoy (S) – Illiomama Buoy (S) – Motukorea Buoy (S) – North Head Buoy (P) – <del>Orakei Buoy (S)</del> – to Finish	6.5
5	5, 1, 2	Start – Bean Rock Buoy (S) – Salt Works Buoy (S) – Rangitoto Buoy (P) – Illiomama Buoy (S) – Motukorea Buoy (S) – Northern Leading Buoy (P) – <del>Orakei Buoy (S)</del> – to Finish	10.9
	3, 4	Start – Bean Rock Buoy (S) – Flax Point Buoy (S) – Motukorea Buoy (S) – Northern Leading Buoy (P) – <del>Orakei Buoy (S)</del> – to Finish	8.4
6	5, 1, 2	Start – Rangitoto Buoy (S) – Motukorea Buoy (P) – Illiomama Buoy (S) – Navy Buoy (S) – Illiomama Buoy (P) – <del>Orakei Buoy (S)</del> – to Finish	10.9
	3, 4	Start – Rangitoto Buoy (S) – Motukorea Buoy (P) – Illiomama Buoy (S) – Motukorea Buoy (S) – Rough Rock Buoy (P) – <del>Orakei Buoy (S)</del> – to Finish	8.1



**Race 2 – Saturday 12 February 2022**

**Race 4 – Sunday 13 February 2022**

Course No.	Divisions	Course	Dist. (nm)
1	5, 1, 2	Start – Resolution Buoy (S) – North Head Buoy (P) – Salt Works Buoy (S) – Rangitoto Buoy (S) – to Finish	7.9
	3, 4	Start – Resolution Buoy (S) – North Head Buoy (P) – Flax Point Buoy (S) – Rangitoto Buoy (S) – to Finish	6.7
2	5, 1, 2	Start – Resolution Buoy (S) – North Head Buoy (P) – Narrow Neck Buoy (S) – Salt Works Buoy (S) – Rangitoto Buoy (S) – to Finish	8.7
	3, 4	Start – Orakei Buoy (S) – North Head Buoy (P) – Narrow Neck Buoy (S) – Salt Works Buoy (S) – Rangitoto Buoy (S) – to Finish	7.6
3	5, 1, 2	Start – Rangitoto Buoy (P) – Salt Works Buoy (P) – North Head Buoy (S) – Resolution Buoy (P) – to Finish	7.9
	3, 4	Start – Rangitoto Buoy (P) – Flax Point Buoy (P) – North Head Buoy (S) – Resolution Buoy (P) – to Finish	6.8
4	5, 1, 2	Start – Rangitoto Buoy (P) – Salt Works Buoy (P) – Narrow Neck Buoy (P) – North Head Buoy (S) – Resolution Buoy (P) – to Finish	8.5
	3, 4	Start – Rangitoto Buoy (P) – Salt Works Buoy (P) – Narrow Neck Buoy (P) – North Head Buoy (S) – Orakei Buoy (P) – to Finish	7.5
5	5, 1, 2	Start – Orakei Buoy (S) – Rough Rock Buoy (S) – Motukorea Buoy (P) – Illiomama Buoy (P) – Rangitoto Buoy (P) – to Finish	8.9
	3, 4	Start – Bean Rock Buoy (S) – Rough Rock Buoy (S) – Motukorea Buoy (P) – Illiomama Buoy (P) – Rangitoto Buoy (P) – to Finish	7.7
6	5, 1, 2	Start – Rangitoto Buoy (S) – Illiomama Buoy (S) – Motukorea Buoy (S) – Rough Rock Buoy (P) – Orakei Buoy (P) – to Finish	8.9
	3, 4	Start – Rangitoto Buoy (S) – Illiomama Buoy (S) – Motukorea Buoy (S) – Rough Rock Buoy (P) – Bean Rock Buoy (P) – to Finish	7.7
7	5, 1, 2	Start – Bean Rock Buoy (S) – North Head Buoy (S) – Salt Works Buoy (S) – Motukorea Buoy (P) – Illiomama Buoy (P) – Rangitoto Buoy (P) – to Finish	9.8
	3, 4	Start – Bean Rock Buoy (S) – North Head Buoy (S) – Flax Point Buoy (S) – Motukorea Buoy (P) – Illiomama Buoy (P) – Rangitoto Buoy (P) – to Finish	8.7
8	5, 1, 2	Start – Rangitoto Buoy (S) – Motukorea Buoy (P) – Illiomama Buoy (P) – Rough Rock (S) – Salt Works Buoy (S) – Rangitoto Buoy (S) – to Finish	9.0
	3, 4	Start – Rangitoto Buoy (S) – Motukorea Buoy (P) – Illiomama Buoy (P) – Rough Rock (S) – Flax Point Buoy (S) – Rangitoto Buoy (S) – to Finish	7.8



**Race 3 – Saturday 12 February 2022**

**Race 5 – Sunday 13 February 2022**

Course No.	Divisions	Course	Dist. (nm)
1	5, 1, 2	Start – Rangitoto Buoy (S) – Illiomama Buoy (S) – Motukorea Buoy (S) – Flax Point Buoy (P) – Bean Rock Buoy (S) – to Finish	7.9
	3, 4	Start – Rangitoto Buoy (S) – Illiomama Buoy (S) – Motukorea Buoy (S) – Rough Rock Buoy (P) – Bean Rock Buoy (S) – to Finish	7.2
2	5, 1, 2	Start – Bean Rock Buoy (S) – North Head Buoy (S) – Motukorea Buoy (P) – Rangitoto Buoy (P) – to Finish	8.0
	3, 4	Start – Bean Rock Buoy (S) – North Head Buoy (S) – Motukorea Buoy (P) – Northern Leading Buoy (P) – to Finish	7.4
3	5, 1	Start – Rangitoto Buoy (P) – Narrow Neck Buoy (S) – McKenzie Buoy (S) – Bean Rock Buoy (S) – to Finish	7.9
	3, 4	Start – Rangitoto Buoy (P) – Narrow Neck Buoy (S) – Salt Works Buoy (S) – Bean Rock Buoy (S) – to Finish	6.5
4	5, 1, 2	Start – North Head Buoy (S) – McKenzie Buoy (P) – Narrow Neck Buoy (P) – Rangitoto Buoy (S) – Bean Rock Buoy (S) – to Finish	10.0
	3, 4	Start – North Head Buoy (S) – Salt Works Buoy (P) – Narrow Neck Buoy (P) – Flax Point Buoy (S) – Bean Rock Buoy (S) – to Finish	7.7
5	5, 1	Start – Rangitoto Buoy (S) – Motuihe Channel Green Buoy (S) – Motukorea Buoy (S) – Bean Rock Buoy (S) – to Finish	10.3
	3, 4	Start – Rangitoto Buoy (S) – Illiomama Buoy (S) – Motukorea Buoy (S) – Flax Point Buoy (P) – Rough Rock Buoy (P) – Bean Rock Buoy (S) – to Finish	7.9
6	5, 1, 2	Start – Rangitoto Buoy (S) – Motukorea Buoy (P) – Illiomama Buoy (S) – Navy Buoy (S) – Rangitoto Buoy (P) – Bean Rock Buoy (S) – to Finish	10.9
	3, 4	Start – Rangitoto Buoy (S) – Motukorea Buoy (P) – Illiomama Buoy (S) – Motukorea Buoy (S) – Rangitoto Buoy (P) – Rough Rock Buoy (P) – Bean Rock Buoy (S) – to Finish	8.6
7	5, 1, 2	Start – Orakei Buoy (S) – McKenzie Buoy (P) – Narrow Neck Buoy (P) – Rangitoto Buoy (S) – Bean Rock Buoy (S) – to Finish	11.7
	3, 4	Start – Orakei Buoy (S) – Salt Works Buoy (P) – Narrow Neck Buoy (P) – Rangitoto Buoy (S) – Bean Rock Buoy (S) – to Finish	10.0

## ADDENDUM C

**Prohibited Racing Areas:** Boats racing shall not sail in the prohibited racing areas listed below. These prohibited racing areas are designated as Obstructions for the purposes of the RRS Definitions and RRS 19 and 20.

- 1 The Commercial Harbour area defined by a straight line drawn between the most northern point of Wynyard Point and the north western point of the Fergusson (container) Terminal – (diagram A),
- 2 The Defence area marked on Chart NZ 5322 around the Naval Dock, Calliope Wharves, Z Devonport – (diagram B).

**Large Vessel Moving Prohibited Zones:** At all times boats shall comply with the Auckland Council Navigation Safety Bylaw 2021 Part 2, Subpart 10, clause 54 – “Moving Prohibited Zone” as described below. Moving Prohibited Zones are designated as Obstructions for the purposes of the RRS Definitions and RRS 19 and 20. Auckland Council Navigation Safety Bylaw 2021 – Part 2, Subpart 10 – 54 - **Vessels Must Not Impede a Large Vessel In A Pilotage Area,**

- 1 The person in charge of a vessel under 500 gross tonnage in a pilotage area must not allow that vessel to impede the navigation of any vessel of 500 gross tonnage or more.
- 2 The person in charge of a vessel must not navigate the vessel within the moving prohibited zone of a large vessel that is in a pilotage area.
- 3 A moving prohibited zone is an area of navigable water around a large vessel that –
  - a. extends 100 metres to each side or the width of the marked channel, whichever is the lessor distance; and
  - b. continues at the width in (a) to 100 metres astern and 500 metres ahead of the vessel; and
  - c. follows the line of the marked or buoyed channel when changing course.
- 4 However (2) does not apply to the pilotage area within the Tamaki River.



ROYAL NEW ZEALAND YACHT SQUADRON



THE CLASSIC YACHT ASSOCIATION OF NEW ZEALAND

Diagram A

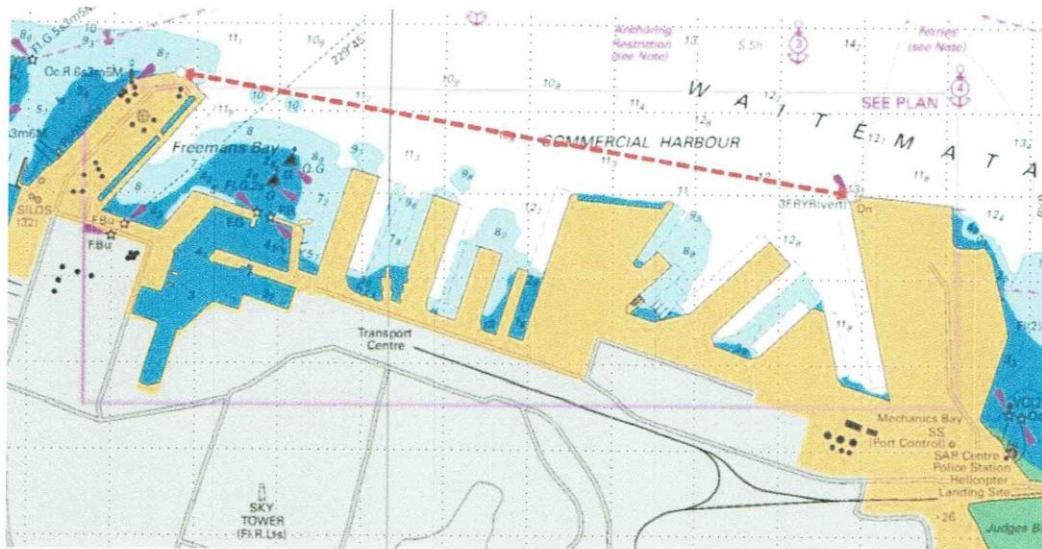


Diagram B

