



Perpetual Guardian Classic Yacht Regatta 20 - 23 February 2025

The Organising Authority is the

*Royal New Zealand Yacht Squadron and the Classic Yacht Association of New Zealand
181 Westhaven Drive, Westhaven, Auckland 1101 Tel: +64 21 818-448*

www.classicyacht.org.nz

SAILING INSTRUCTIONS

Amendment to 11.2

Amendment to 5.1

1. Rules

- 1.1. The event will be governed by the rules as detailed in the Notice of Race (NOR)
- 1.2. Boats shall carry an operational VHF radio.
- 1.3. Should there be any conflict between the Notice of Race (NOR) and these Sailing Instructions, the Sailing Instructions shall prevail. This amends Rule 63.5(c)

2. Changes to Sailing Instructions

- 2.1. Any change to the Sailing Instructions will be posted on the official noticeboard before 0900 on the day it will take effect, except that any change to the schedule of races will be posted by 1900 hours on the day before it will take effect.

3. Communications with Competitors

- 3.1. Notices to competitors will be posted on the official noticeboard located inside the western Main Entrance of the RNZYS clubrooms.
- 3.2. On the water the race committee intends to monitor and communicate with competitors on VHF 77 which must be always monitored by competitors.

4. Schedule of Events

- 4.1. Briefing: A skippers briefing will be held at 1830hrs on Thursday 20 February in the Quarterdeck Restaurant at the Royal New Zealand Yacht Squadron (Race HQ). Attendance is requested for all skippers or a designated crew member from each yacht.
- 4.2. The schedule of races is as follows:

Day/Date	Race	Time of first warning signal
Fri 21 February	1	1545
Sat 22 February	2&3	1055
Sun 23 February	4 or Races 4&5	1055

- 4.3. Details of start times for each Division are shown in Addendum A.
- 4.4. Race HQ will be open on Friday and Saturday after racing for drinks and informal race day prizegiving.
- 4.5. The Event prizegiving will be held in the Quarterdeck Restaurant (Race HQ) after racing on Sunday.

5. Divisional Flags

5.1. The following divisions will apply to each race individually and the series results.

Division 1	Classic A Bermudan Rigged	Black
Division 2	Classic A Gaff Rigged	Purple
Division 3	Classic B	Green
Division 5	A Modern Classic	White

6. Courses

- 6.1. No later than the warning signal, the Race Committee will designate the course to be sailed by displaying the course number. The courses to be sailed, the order in which the marks are to be passed, and the side on which each mark is to be left are shown in Addendum B - Courses.
- 6.2. Should conditions be unsuitable for the completion of a race on any day the Race Committee may change any course. Any change will be advised on VHF 77 before the warning signal of that race. Failure to hear the change will not be grounds for a request for redress. This changes RRS 62.1.(a).

7. Marks

- 7.1. The starting marks are detailed in SI 10.1
- 7.2. The finishing marks are described in SI 11.1 and 11.2.
- 7.3. All rounding marks will be the Auckland Harbour racing buoys. In the event of one of the racing buoys being missing, then a yellow replacement buoy will be laid in the same location

8. Fairway Marks

Boats racing shall pass on the main channel side of the following fairway marks:

1. Rangitoto Beacon,
2. Iliomama Rock Beacon,
3. Browns Island Beacon,
4. Beacon on Emu Rock (off Motutapu),
5. Bean Rock Light and Doris Rock Beacon (approx. 25m north),
6. Red buoys on eastern side of Motuihe Channel
7. Beacon on Sewer Outlet (Orakei),
8. Cable beacons east of Devonport Wharf,
9. Green Sandspit marker stake (SW of Torpedo Wharf),
10. All moored vessels in or adjacent to the designated Small Craft Moorings areas shown on Chart NZ 5322.
11. The Okahu Bay wave break and all moored vessels in the Okahu Bay mooring area
12. The harbour bridge main navigational span pylons.

9. Obstructions - Refer Addendum C

10. The Start

- 10.1 The start line for Race 1 will be between a staff displaying an orange flag on the race committee vessel and the course side of Bayswater Buoy.
- 10.2 For all other races the start area is in the Northern Leading area. The start line will be between a staff displaying an orange flag on the race committee vessel and the course side of a laid blue outer distance mark.
- 10.3 Boats whose warning signal has not been made shall avoid the starting area during the starting sequence for other races. The starting area is defined as the area 50 meters from the starting line and marks in all directions.
- 10.4 To alert boats that a race or sequence of races will begin soon, the orange starting line flag will be displayed with one sound at least three minutes before a warning signal is made.

- 10.5 If any part of a boat's hull is on the course side of the starting line at her starting signal and she is identified, the race committee will broadcast her name and/or sail number on VHF 77. Failure to make a broadcast, failure of her to hear such a broadcast, or the order in which boats are broadcast will not be grounds for a request for redress. This changes RRS 61.4 (b)(1).
- 10.6 General Recalls: In the event of a General Recall the recalled division will be restarted 5 minutes after the last scheduled start. If more than one division is recalled these divisions will start at 5-minute intervals after the last scheduled start in the sequence in which they were recalled. In the event that the last scheduled division to start is recalled and no other division has been recalled previously the new warning signal will be given no less than 5 minutes after the previous starting signal. "First Substitute" will be lowered at the same time as the new warning signal is flown (This changes RRS 29.2). In all other cases "First Substitute" will be lowered at the same time as the preparatory signal is lowered 1 minute before the start of the next division.

11. The Finish

- 11.1 For Races 1, 3 & 5 the finish line will be between a staff displaying a blue flag on the race committee vessel and the course side of Resolution Buoy.
- 11.2 For Race 2 & 4 the finish line will be between a staff displaying a blue flag on the race committee vessel and the course side of a laid blue outer distance mark in the Northern Leading area.
- 11.3 Should there be only one race on Sunday 23 February, the finish line for Race 4 will be as per 11.1

12. Penalty System

- 12.1 A boat that has taken a penalty or retired under Rule 31 or Rule 44.1 shall notify the Race Officer within the protest time limit.
- 12.2 The two-turns penalty as per RRS 44.1 will apply.

13. Time Limits and Target Times

Race	Race Time Limit	Finish Window
1,2 & 4	120min	40min
3 and 5	1700hrs	-

- 13.1 The finishing window is the time for boats to finish after the first boat sails the course and finishes. Boats failing to finish within the Finishing Window, and not subsequently retiring, penalised or given redress, will be scored Time Limit Expired (TLE) without a hearing. A boat scored TLE shall be scored points for the finishing place one more than the points scored by the last boat that finished within the Finishing Window. This changes RRS 35, A5.1, A5.2 and A10.

14. Hearing Requests

- 14.1 Immediately after finishing a boat intending to protest shall, in addition to the requirements of Rule 60.2.(a)(1), inform the race committee boat at the finishing line of her intention to protest and the identity of the boat(s) protested. The protesting boat must receive an acknowledgement from the race committee. This changes Rule 60.
- 14.2 Hearing request Forms will be available from the Sailing Office at the RNZYS and at [Sailing Protests - Royal New Zealand Yacht Squadron \(rnzys.org.nz\)](https://www.rnzys.org.nz) Protests shall be delivered to the Sailing Office at the RNZYS within the protest time limit.
- 14.3 For each division, the protest time limit is 90 minutes after the last boat has finished the last race of the day. The same protest time limit applies to all protests by the race committee and protest committee and to requests for redress. This changes Rule 60.3
- 14.4 Notices will be posted within 30 minutes of the protest time limit to inform competitors of hearings in which they are parties or named as witnesses. All hearings will be held at RNZYS.
- 14.5 Notices of protests by the race committee or protest committee will be posted to inform boats under RRS 60.2 (b)
- 14.6 On the last day of the regatta a request for reopening a hearing shall be delivered:
- within the protest time limit if the requesting party was informed of the decision on the previous day
 - no later than 30 minutes after the party reopening was informed of the decision on that day.
 - This changes Rule 61.2

15. Scoring

- 15.1 A total of 5 races are scheduled, one (1) race will constitute a series. Each boat's series score shall be the total of her race scores excluding her one worst score after 3 races have been sailed.

16. Handicapping

- 16.1 CYANZ handicaps will be used for Classic and Modern Classic divisions.
- 16.2 Class Association handicaps will be used for all class yachts competing unless there are less than four boats entered from the class. If there are less than four boats the boats will be handicapped by the CYA. The Handicapper, as appointed by the Organising Authority, shall reserve the right to review or adjust any boat's rating or handicap during the regatta. This shall be carried out in consultation with the Race Committee and any decision to alter a boat's rating shall be final and no correspondence will be entered into

17. Prizes

- 17.1 Trophies will be awarded in all divisions and classes (minimum of 4 entries) as follows:
- 17.1.1 Minimum of 4 entries: Winners on Line and 1st on Handicap.
- 17.1.2 4-6 entries: Winners on Line and 1st & 2nd on Handicap.
- 17.1.3 7+ entries: Winners on Line and 1st, 2nd & 3rd on Handicap.
- 17.2 The number of entries as above will be determined on Wednesday 12 February 2025 but not before the Race Committee has considered late entries, if any.
- 17.3 The winners of all cups and trophies shall retain the trophies in perpetuity except for the Col Wild Trophy, the Alden Tray, the Peters & May Trophy, and the American Flag.
- 17.4 Spot Prizes
- 17.4.1 Friday & Saturday: Spot prizes may be claimed by a crew member of the winning boat.
- 17.4.2 Sunday: The helmsperson or owner who signed the entry form MUST be present to collect spot prizes or they will be redrawn

18. Safety Regulations

- 18.1 All skippers are to familiarize themselves with the Event Safety Plan which can be found on the Event website.
- 18.2 A boat that retires from a race shall notify the race committee as soon as possible via VHF channel 77 or by calling the Race Officer on 027 451-6851 or 021 818-448.
- 18.3 Requests for assistance are to comply with international calling formats and direction as follows:
- 18.3.1 Distress & Emergency Calls: VHF Channel 16 ([Coastguard New Zealand](#))
- 18.3.2 Prompt Vessel or Medical Assistance: VHF Channel 60 (Outer Gulf), VHF Channel 64 (Inner Gulf).
- 18.3.3 Mobile: *500

19. Insurance

- 19.1 Each participating boat shall be insured with valid marine third-party liability insurance with a minimum cover to \$5,000,000 per incident or the equivalent.

20. Disclaimer of Liability

All those taking part in RNZYS/CYA races or any other sailing events controlled by the RNZYS/CYA, as between the RNZYS/CYA and each of those so taking part, do so at their own risk and responsibility and the RNZYS/CYA and any sponsor associated with this event has no liability for any damage, loss or any penalty suffered by any boat crew or any other person taking part in such events. The RNZYS/CYA and any sponsor associated with this event shall not be responsible for the seaworthiness of a boat whose entry is accepted and/or the sufficiency and/or adequacy of its equipment or the competence of its skipper or crew. RNZYS/CYA reserves the right in its sole and uncontrolled discretion to refuse any entry.

ADDENDUM A - Start & Finish

Race 1 - Friday 21 February 2025

1550hrs	Division 5
1555hrs	Divisions 1 & 2
1600hrs	Divisions 3 & 4

Race 2 – Saturday 22 February 2025

1100hrs	Division 5
1105hrs	Divisions 1 & 2
1110hrs	Divisions 3 & 4

Race 3 – Saturday 22 February 2025

Race 3 will start as soon as possible following completion of all boats participating in the preceding race and within the time limit as described in SI 13.

Boats will start in the same sequence as detailed for Race 2

Race 4 – Sunday 23 February 2025

1100hrs	Division 5
1105hrs	Divisions 1 & 2
1110hrs	Divisions 3 & 4

If a Race 5 is held then Race 5 will start as soon as possible after the completion of all boats participating in the preceding Race 4 and within the time limit as described in SI 13.

Boats will start in the same sequence as detailed for Race 4.

ADDENDUM B - Courses

Race 1- Friday 21 February 2025

Course No.	Divisions	Course	Dist. (nm)
1	5, 1, 2	Start - North Head Buoy (P) - Salt Works Buoy (S) - Northern Leading Buoy (S) - to Finish	9.1
	3, 4	Start - North Head Buoy (P) - Flax Point Buoy (S) – Northern Leading Buoy (S) - to Finish	7.8
2	5, 1, 2	Start - Rangitoto Buoy (P) – Narrow Neck Buoy (P) – North Head Buoy (S) - to Finish	9.8
	3, 4	Start - Rangitoto Buoy (P) – Flax Point Buoy (P) - North Head Buoy (S) - to Finish	8.7
3	5, 1, 2	Start- Orakei Buoy (P) - Rough Rock Buoy (P) - Narrow Neck Buoy (S) - Flax Point Buoy (S) – Bean Rock Buoy (S)- to Finish	10
	3, 4	Start - Orakei Buoy (P) - Flax Point Buoy (S) –Bean Rock Buoy (S) - to Finish	8
4	5, 1, 2	Start – Torpedo Buoy (S) -Bean Rock Buoy (P) –Flax Point Buoy (P) – North Head Buoy (P) – to Finish	7.7
	3, 4	Start –Torpedo Buoy (S) – Orakei Buoy (P) – Rough Rock Buoy (P) - North Head Buoy (P) – Bean Rock Buoy (S) – to Finish	6.8
5	5, 1, 2	Start – Orakei Buoy (P) – Northern Leading Buoy (P) – Flax Point Buoy (P) – North Head Buoy (P) - to Finish	8.3
	3, 4	Start – Orakei Buoy(P) – Northern Leading Buoy (P) – Rough Rock Buoy (P) North Head Buoy (P) - to Finish	7.3
6	5, 1, 2	Start – North Head Buoy (P) – Flax Point Buoy (P) – North Head Buoy (P) –Flax Point Buoy (P) – North Head Buoy (P) - to Finish	9.9
	3, 4	Start – North Head Buoy (P) – Rangitoto Buoy (P) – North Head Buoy (P) – Bean Rock Buoy (S) - to Finish	8.1
7	5, 1, 2	Start – Torpedo Buoy (S) – Flax Point Buoy (S) – North Head Buoy (P) – Orakei Buoy (S) – to Finish	7.3
	3, 4	Start – Torpedo Buoy (S) – Rough Rock Buoy (S) – North Head Buoy (P) – Orakei Buoy (S) – finish	5.7
8	5, 1, 2	Start – Bean Rock Buoy (P) – Rangitoto Buoy (S) – Northern Leading Buoy (S) Orakei Buoy (S) – to Finish	8.1
	3, 4	Start – Bean Rock Buoy (P) – Rough Rock Buoy (S) – Northern Leading Buoy (S) - Orakei Buoy (S) – to Finish	7.7

Race 2 - Saturday 22 February 2025

Race 4 - Sunday 22 February 2025

Course No.	Divisions	Course	Dist. (nm)
9	5, 1, 2	Start - Resolution Buoy (S) - North Head Buoy (P) - Salt Works Buoy (S) - Rangitoto Buoy (S) - to Finish	7.9
	3, 4	Start - Resolution Buoy (S) - North Head Buoy (P) - Flax Point Buoy (S) - Rangitoto Buoy (S) - to Finish	6.7
10	5, 1, 2	Start - Resolution Buoy (S) - North Head Buoy (P) - Narrow Neck Buoy (S) - Salt Works Buoy (S) - Rangitoto Buoy (S) - to Finish	8.7
	3, 4	Start - Orakei Buoy (S) - North Head Buoy (P) - Narrow Neck Buoy (S) - Salt Works Buoy (S) - Rangitoto Buoy (S) - to Finish	7.6
11	5, 1, 2	Start - Rangitoto Buoy (P) - Salt Works Buoy (P) - North Head Buoy (S) - Resolution Buoy (P) - to Finish	7.9
	3, 4	Start - Rangitoto Buoy (P) - Flax Point Buoy (P) - North Head Buoy (S) - Resolution Buoy (P) - to Finish	6.8
12	5, 1, 2	Start - Rangitoto Buoy (P) - Salt Works Buoy (P) - Narrow Neck Buoy (P) - North Head Buoy (S) - Resolution Buoy (P) - to Finish	8.5
	3, 4	Start - Rangitoto Buoy (P) - Salt Works Buoy (P) - Narrow Neck Buoy (P) - North Head Buoy (S) - Orakei Buoy (P) - to Finish	7.5
13	5, 1, 2	Start - Orakei Buoy (S) - Rough Rock Buoy (S) - Motukorea Buoy (P) - Illiomama Buoy (P) - Rangitoto Buoy (P) - to Finish	8.9
	3, 4	Start - Bean Rock Buoy (S) - Rough Rock Buoy (S) - Motukorea Buoy (P) - Illiomama Buoy (P) - Rangitoto Buoy (P) - to Finish	7.7
14	5, 1, 2	Start - Rangitoto Buoy (S) - Illiomama Buoy (S) - Motukorea Buoy (S) - Rough Rock Buoy (P) - Orakei Buoy (P) - to Finish	8.9
	3, 4	Start - Rangitoto Buoy (S) - Illiomama Buoy (S) - Motukorea Buoy (S) - Rough Rock Buoy (P) - Bean Rock Buoy (P) - to Finish	7.7
15	5, 1, 2	Start - Bean Rock Buoy (S) - North Head Buoy (S) - Salt Works Buoy (S) - Motukorea Buoy (P) - Illiomama Buoy (P) - Rangitoto Buoy (P) - to Finish	9.8
	3, 4	Start - Bean Rock Buoy (S) - North Head Buoy (S) - Flax Point Buoy (S) - Motukorea Buoy (P) - Illiomama Buoy (P) - Rangitoto Buoy (P) - to Finish	8.7
16	5, 1, 2	Start - Rangitoto Buoy (S) - Motukorea Buoy (P) - Illiomama Buoy (P) - Rough Rock (S) - Salt Works Buoy (S) - Rangitoto Buoy (S) - to Finish	9.0
	3, 4	Start - Rangitoto Buoy (S) - Motukorea Buoy (P) - Illiomama Buoy (P) - Rough Rock (S) - Flax Point Buoy (S) - Rangitoto Buoy (S) - to Finish	7.8

Race 3 - Saturday 22 February 2025

Race 5 - Sunday 23 February 2025

Course No.	Divisions	Course	Dist. (nm)
17	5, 1, 2	Start- Rangitoto Buoy (S) - Illiomama Buoy (S) - Motukorea Buoy (S) - Flax Point Buoy (P)- Bean Rock Buoy (S) - to Finish	7.9
	3, 4	Start - Rangitoto Buoy (S) - Illiomama Buoy (S) - Motukorea Buoy (S) - Rough Rock Buoy (P) - Bean Rock Buoy (S) - to Finish	7.2
18	5, 1, 2	Start - Bean Rock Buoy (S) - North Head Buoy (S) - Motukorea Buoy (P) - Rangitoto Buoy (P) - to Finish	8.0
	3, 4	Start - Bean Rock Buoy (S) - North Head Buoy (S) - Motukorea Buoy (P) - Northern Leading Buoy (P) - to Finish	7.4
19	5, 1	Start - Rangitoto Buoy (P) - Narrow Neck Buoy (S) - McKenzie Buoy (S) - Bean Rock Buoy (S) - to Finish	7.9
	3, 4	Start - Rangitoto Buoy (P) - Narrow Neck Buoy (S) - Salt Works Buoy (S) - Bean Rock Buoy (S) - to Finish	6.5
20	5, 1, 2	Start - North Head Buoy (S) - McKenzie Buoy (P) - Narrow Neck Buoy (P) - Rangitoto Buoy (S) - Bean Rock Buoy (S) - to Finish	10.0
	3, 4	Start - North Head Buoy (S) - Salt Works Buoy (P) - Narrow Neck Buoy (P) - Flax Point Buoy (S) - Bean Rock Buoy (S) - to Finish	7.7
21	5, 1	Start - Rangitoto Buoy (S) - Motuihe Channel Green Buoy (S) - Motukorea Buoy (S) - Bean Rock Buoy (S) - to Finish	10.3
	3, 4	Start - Rangitoto Buoy (S) - Illiomama Buoy (S) - Motukorea Buoy (S) - Flax Point Buoy (P) - Rough Rock Buoy (P) - Bean Rock Buoy (S) - to Finish	7.9
22	5, 1, 2	Start - Rangitoto Buoy (S) - Motukorea Buoy (P) - Illiomama Buoy (S) - Navy Buoy (S) - Rangitoto Buoy (P) - Bean Rock Buoy (S) - to Finish	10.9
	3, 4	Start - Rangitoto Buoy (S) - Motukorea Buoy (P) - Illiomama Buoy (S) - Motukorea Buoy (S) - Rangitoto Buoy (P) - Rough Rock Buoy (P) - Bean Rock Buoy (S) - to Finish	8.6
23	5, 1, 2	Start - Orakei Buoy (S) - McKenzie Buoy (P) - Narrow Neck Buoy (P) - Rangitoto Buoy (S) - Bean Rock Buoy (S) - to Finish	11.7
	3, 4	Start - Orakei Buoy (S) - Salt Works Buoy (P) - Narrow Neck Buoy (P) - Rangitoto Buoy (S) - Bean Rock Buoy (S) - to Finish	10.0

Sunday 23 February 2025 (Alternative long courses)

Course No.	Divisions	Course	Dist. (nm)
24	5,1,2	Start – Rangitoto Buoy (S) – Browns Island Navy (P) – Motuhue Green (P) - Illimoana Buoy (P) – Motukorea Buoy (S) – Rough Rock Buoy (P) - Finish	13.0
	3,4	Start – Rangitoto Buoy (S) – Browns Island Navy Buoy (P) – Illimoana Buoy (P) – Rough Rock Buoy (P) – Finish	10.5
25	5,1,2	Start - Northern Leading Buoy (S) – North Head Buoy (S) – Narrow Neck Buoy (S) – Motukorea Buoy (P) – Illimoana Buoy (P) – Flax Point Buoy (P) – Orakei Buoy (S) – Finish	13.1
	3,4	Start – Northern Leading Buoy (S) – North Head Buoy (S) – Narrow Neck Buoy (S) – Motukorea Buoy (P) – Rangitoto Buoy (P) – Orakei Buoy (S) – Finish	11.2
26	5,1,2	Start – Rangitoto Buoy (S) – Illimoana Buoy (S) – Motukorea Buoy (S) – Cable Buoy (P) – Rough Rock Buoy (P) – Northern Leading Buoy (S) – North Head Buoy (P) – Finish	14.0
	3,4	Start – Rangitoto Buoy (S) – Illimoana Buoy (S) – Motukorea Buoy (S) – Narrow Neck Buoy (S) – Salt Works Buoy (S) – Rough Rock Buoy (P) – Northern Leading Buoy (S) - North Head Buoy (P) – Finish	11.9
27	5,1,2	Start – Rangitoto Buoy (P) – Narrow Neck Buoy (S) – Cable Buoy (S) - McKenzie Buoy (S) – Salt Works Buoy (S) – Rough Rock Buoy (P) – Illimoana Buoy (S) – North Head Buoy (P) – Bean Rock Buoy (S) – Finish	14.7
	3,4	Start – Rangitoto Buoy (P) – Narrow Neck Buoy (S) – Salt Works Buoy (S) – Rough Rock Buoy (P) – Illimoana Buoy (S) – North Head Buoy (P) – Bean Rock Buoy (S) – Finish	11.8
28	5,1,2	Start – Northern Leading Buoy (P) – Motukorea Buoy (P) – Motuhue Green Buoy (P) – Illimoana Buoy (P) – Rough Rock Buoy (S) – Salt Works Buoy (P) – Narrow Neck Buoy (P) – North Head Buoy (P) – Orakei Buoy (S) – Finish	14.9
	3,4	Start – Northern Leading Buoy (P) – Motukorea Buoy (P) – Illimoana Buoy (P) – Rough Rock Buoy (S) – Flax Point Buoy (P) – Salt Works Buoy (P) – Narrow Neck Buoy (P) – North Head Buoy (P) – Orakei Buoy (S) – Finish	11.0
29	5,1,2	Start – Orakei Buoy (S) – Rough Rock Buoy (P) – Cable Buoy (S) – Rangitoto Buoy (S) – Motukorea Buoy (P) – Illimoana Buoy (P) - Finish	16.8
	3,4	Start – Bean Rock Buoy (S) – Rough Rock Buoy (P) - Narrow Neck Buoy (S) – Salt Works Buoy (S) – Rangitoto Buoy (S) – Motukorea Buoy (P) - Illimoana Buoy (P) – Finish	13.1

ADDENDUM C

Prohibited Racing Areas: Boats racing shall not sail in the prohibited racing areas listed below. These prohibited racing areas are designated as Obstructions for the purposes of the RRS Definitions and RRS 19 and 20.

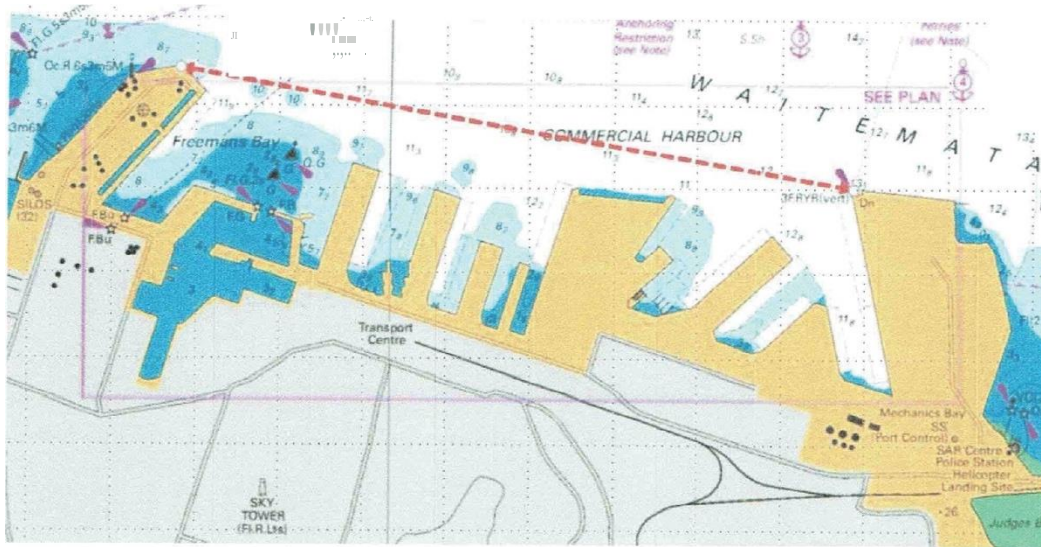
- 1 The Commercial Harbour area defined by a straight line drawn between the most northern point of Wynyard Point and the northwestern point of the Fergusson (container) Terminal - (diagram A),
- 2 The Defence area marked on Chart NZ 5322 around the Naval Dock, Calliope Wharves, Z Devonport- (diagram BJ).

Large Vessel Moving Prohibited Zones: At all times boats shall comply with the Auckland Council Navigation Safety Bylaw 2021 Part 2, Subpart 10, clause 54- "Moving Prohibited Zone" as described below. Moving Prohibited Zones are designated as Obstructions for the purposes of the RRS Definitions and RRS 19 and 20. Auckland Council Navigation Safety Bylaw 2021 - Part 2, Subpart 10- 54 - **Vessels Must Not Impede a Large Vessel In A Pilotage Area,**

- 1 The person in charge of a vessel under 500 gross tonnages in a pilotage area must not allow that vessel to impede the navigation of any vessel of 500 gross tonnage or more.
- 2 The person in charge of a vessel must not navigate the vessel within the moving prohibited zone of a large vessel that is in a pilotage area.
- 3 A moving prohibited zone is an area of navigable water around a large vessel that -
 - a. extends 100 metres to each side or the width of the marked channel, whichever is the lesser distance; and
 - b. continues at the width in (a) to 100 metres astern and 500 metres ahead of the vessel; and
 - c. follows the line of the marked or buoyed channel when changing course.
- 4 However (2) does not apply to the pilotage area within the Tamaki River.



Diagram A



Diagrams

